

**FOOTWEAR  
COLLECTION**  
CALZADO  
COLECCIÓN



**KELME**

**LEAVE  
YOUR  
MARK**



KELME

LEAVE  
YOUR  
MARK



***FOOTBALL***



# SIZE EQUIVALENCE TABLES FOOTBALL SHOES

	BABY						
USA	10	11	12	13	13.5	1.5	2
EUR	28	29	30	31	32	33	34
CHN	190	195	200	205	210	215	220

	JUNIOR/WOMEN				
USA	3	4	4.5	5.5	6
EUR	35	36	37	38	39
CHN	225	230	235	240	245

	SENIOR/MEN							
USA	7	8	8.5	9	10	10.5	11.5	12
EUR	40	41	42	43	44	45	46	47
CHN	250	255	260	265	270	275	280	285

# **SIZE EQUIVALENCE TABLES** **CASUAL/SPORTS SHOES**

	WOMEN					
USA	4.5	5.5	6	6.5	7	8
EUR	35	36	37	37.5	38	39
CHN	220	225	230	235	240	245

		MEN						
USA	6.5	7	8	8.5	9	9.5	10.5	11
EUR	39	40	41	42	42.5	43	44	45
CHN	245	250	255	260	265	270	275	280

# KELME TECHNOLOGIES



## NUESTRAS SUELAS OUR OUTSOLES



### TECHNOLOGIES:



PHYLON TECH



K-FLEX



ULTRA GRIP



ESTROBEL

The outsole is made of natural rubber. It adopts ergonomic three-dimensional triangular muscles to arrange the position, and the distribution of the points is balanced. It can complete the ordinary steering and easily adapt to various movements.



### TECHNOLOGIES:



ULTRA GRIP



MICRO TECH



K-FLEX



ESTROBEL

The outsole is made of lightweight TPU and is ergonomically designed with 27 round nails for a light, comfortable and stable performance. The mid-waist three-dimensional support bar can lock energy and is the preferred equipment for artificial grass competition.



### TECHNOLOGIES:



ULTRA GRIP



MICRO TECH



K-FLEX



ESTROBEL

The outsole is made of lightweight TPU. The ergonomic design of the natural turf is composed of the front 7 and the rear 4 V-shaped nails. It is lighter and more comfortable, with strong grip and explosive power. The mid-waist three-dimensional support bar can lock energy and is the preferred equipment for natural grass competition.



### TECHNOLOGIES:



PHYLON TECH



K-FLEX



ULTRA GRIP



NON-MARKING



ESTROBEL

The outsole is made of natural rubber, and the ergonomic nailing method increases the design of the gyration zone and enhances the energy feedback of emergency stop and steering.





### TECHNOLOGIES:



PHYLON TECH



K-FLEX



ULTRA GRIP



ESTROBEL

The outsole is made of natural rubber, and the ergonomic nailing method increases the design of the gyration zone and enhances the energy feedback of emergency stop and steering.



### TECHNOLOGIES:



PHYLON TECH



K-FLEX



ULTRA GRIP



NON-MARKING



ESTROBEL

The outsole is made of natural non-marking rubber. The various shapes of the groove design enhance the bottom and ground friction and slip resistance, and enable the athlete to quickly and stably complete various action .



### TECHNOLOGIES:



The EVA midsole uses “new window” technology, which is designed to withstand all impacts from the ground, combined with a central keel support structure for an excellent wearing experience. The “☒” shape cut on the side can feel greater energy feedback during running. The running water line in the block shape of the toe can give the wearer great grip when exercising, and the black reinforcing area is more wear-resistant.



### TECHNOLOGIES:



The one-piece EVA midsole adds a big TPU patch to the heel side for greater integrity and stability.

The wear-resistant RB rubber outsole has a gradual hollowing for enhanced grip, and the representative LOGO incorporates the design to enhance the visual presentation of the sole.



### TECHNOLOGIES:



The outsole is made of EVA material, and the pentagon texture of different sizes enhances the visual impact. The rubber grain design creates extraordinary grip.



### TECHNOLOGIES:



Midsole adopts double density EVA bottom, which is lightweight and elastic.

The wear-resistant anti-slip RB rubber is placed in the easy wear out parts of the sole, and the unique custom-made anti-slip texture line can bring great grip and slip resistance to the wearer. The "K" shaped TPU in the sole enhances the torsion resistance of the shoes, and the use of the midsole TPU structure can keep the overall shoes more stable.



### TECHNOLOGIES:



E-TPU popcorn midsole which has super resilience, and also a continuous triangle on the side makes the outsole more stable and compressive.

The RB rubber outsole is bent upwards from the toe to prevent any injury during accidental collisions. The different size triangular RB texture ensures that the wearer has a strong grip for each point of force.



### TECHNOLOGIES:



The one-piece high-elastic EVA midsole has a penetrating concave horizontal strip on the side, which provides a better cushioning space for the wearer when the force is applied. The different depth of the guide groove can make the wearer rapidly export the moisture of the sole in rainy days.

The ergonomically designed semi-transparent crystal bottom which can enhance the layering of the sole and provides great grip.





### TECHNOLOGIES:



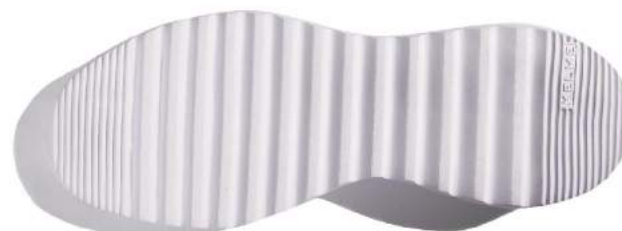
The midsole is adopted cushioned EVA and equipped with a non-crossing and wear-resistant rubber outsole. The delicate texture lines give the athletes a full grip and excellent resistance to twisting when they stop or change direction.



### TECHNOLOGIES:



The entire sole is made of a highly stable IP material, which is light and comfortable. The sole uses a large number of honeycomb texture lines combined with the logo to enhance the grip, and the TPU on the heel side of the sole enhances the combination of the sole and the body.



### TECHNOLOGIES:



The midsole uses an integrated IP outsole, which has the characteristics of light weight and good elasticity. The forefoot and heel are all fine lines, which increase friction and anti-skid ability. The middle of the large lines, mainly to reduce the weight of the sole.





### TECHNOLOGIES:



The midsole uses high-elastic EVA, and “cellular cushioning technology” with unique honeycomb texture lines, effectively absorb energy and reduce the burden of foot. The honeycomb texture runs through the entire RB backsheet, providing slip resistance while giving the entire sole integrity.



### TECHNOLOGIES:



The outsole uses a single shot EVA, which is flexible, easy to bend and light. The sulcus of the soles can enhance the grip. It is the preferred midsole for light running shoes.



### TECHNOLOGIES:



The high-elastic EVA midsole, which extends from the heel to the incision of the toe, can feel greater energy feedback during wear.

The RB bottom is wear-resistant and non-slip, and the representative LOGO is integrated into the design to enhance the visual presentation of the sole.







## 68831124 - MEN'S FOOTBALL SHOES(TF)

Shell:Microfiber Outsole: MD+RB

Sizes:39-44



417 - Sapphire Blue



### DESCRIPTION:

With carbon fiber synthetic leather as the upper material, which is beautiful comfortable and suitable for trainers as well as small-scale competition in artificial grass ground.

with carbon fiber synthetic leather and new upper streamline sewing line and mesh holes added to the heel to improve air permeability. EVA cushion mid-sole with loop nail bottom enhance the grip and steering stability, which can meet needs of daily training and small-scale competition in artificial grass ground.



000 - Black



611 - Red/Black



LEAVE  
YOUR  
MARK

**68831129 - MEN'S FOOTBALL SHOES(IN)**

Shell:Oxford+TPU Outsole:RB

Sizes:39-45



413 - Sapphire Blue/Orange

**DESCRIPTION:**

With new seamless technology design and rubber mid-sole, it is quite suitable for trainers and casual wear.

It is the revival of Spanish classic, with seamless technology and elastic shoes collar design, which is comfortable and suitable for training and casual wear with TPU supporting in back heel and antiskid rubber bottom.



012 - Black/Neon Yellow



611 - Red/Black



## 68833134 - KID'S FOOTBALL SHOES(TF)

Shell:Synthetic Outsole:RB

Sizes:28-39



413 - Sapphire Blue/Orange



002 - Black/Royal Blue



### DESCRIPTION:

It uses velcro, which is convenient for young children to wear, and is equipped with the special sole for artificial grass, suitable for trainers and small competition.

## 68831126 MEN'S FOOTBALL SHOES(AG) 68833126 KID'S FOOTBALL SHOES(AG)

Shell: Synthetic Outsole: TPU

Sizes:40-45/32-39



907 - Neon Orange



417 - Sapphire Blue



### DESCRIPTION:

It is adopted PVC dedicated leather and lightweight TPU mid-sole design, suitable for daily training and medium large artificial ground.

It uses PVC dedicated leather , and anti-skid fabric on the back. With beautiful surface stitching and TPU round nail mid-sole, is suitable for daily training and medium to large scale competition.

## 68831128 - MEN'S FOOTBALL SHOES (IN)

Shell: Microfiber+Mesh Outsole:MD+RB

Sizes:39-45



413 - Sapphire Blue/Orange



012 - Black/Neon Yellow



### DESCRIPTION:

Adopting super fiber as the upper material which is full-fashioned, and suitable for trainers and casual wear,

The revival of Spanish classic, adopting soft super fiber and fabrics, which is comfortable and fit feet well. With flawless rubber and cushion EVA mid-sole, suitable for trainers and casual wear.



**68831121 - MEN'S FOOTBALL SHOES (TF)**

Shell: Microfiber+Mesh Outsole:RB

Sizes:39-45



010 - Black/Neon Green



413 - Sapphire Blue/Orange



930 - Neon Yellow/Black

**DESCRIPTION:**

It is adopted super fiber leather as the upper material, can provide comfortable foot covering, which is suitable for trainers and small artificial lawn competition.

With soft super fiber and elastic shoes collar design, which greatly improve the package performance. The design of triangle nail sole can enhance the function of grasping the ground, which can meet the daily training and the use of small artificial lawn competition.



## 68833133 - KID'S FOOTBALL SHOES (TF)

Shell: Synthetic+Mesh Outsole:RB

Sizes:28-39



417 - Sapphire Blue



907 - Neon Orange



### DESCRIPTION:

It uses velcro, which is convenient for young children to wear, and is equipped with the special sole for artificial grass, suitable for trainers and small competition.

The material adopts PVC synthetic leather and breathable fabric design, which can improve the breathable performance. The velcro design is convenient to wear. The rubber TF sole is quiet suitable for artificial ground and daily training.

## 6871001 - MEN FOOTBALL SHOES (AG)

Composition: Microfiber

Sizes: 39 - 44



000 - Black



103 - White/Black



905 - Neon Yellow



### DESCRIPTION:

With super fiber surface design which is soft and comfortable. AG transparent TPU outsole, enhance the texture of the shoes.

Adopting Super fiber surface with simple stitching design, AG sole, and professional last design, which can meet the needs of daily training and competition.

## 55725 - INDOOR FUTSAL SHOES (IN)

Composition : PU

Sizes: 39 - 44



037 - Black/Golden



123 - White/Golden



932 - Neon Orange/Black



930- Neon Yellow/Black



440 - Dark Blue/Neon Green



LEAVE  
YOUR  
MARK



## 6871002 - MEN FOOTBALL SHOES (IN)

Composition: Microfiber

Sizes: 39 - 45



003-Black/White



000-Black



103-White/Black



### DESCRIPTION:

With super fiber surface design which is soft and comfortable , and rebound MD midsole and wearable rubber outsole, is suitable for training and competition.

**Super fiber with simple stitching design, cushion outsole and classic black and white color, fashionable and classic.**



## K98 - ADULT FOOTBALL SHOES (TF)

Composition: Synthetic Leather

Sizes: 39 - 44



055-Black/Silver



905 - Neon Yellow



907 - Neon Orange



328 - Mint Green



413 - Sapphire Blue/Orange



### DESCRIPTION:

Selecting durable synthetic leather for soccer, with fashionable element design, it is the first choice for the daily competition and training of fashionable football fans.

With flexible sole and special football-last, it feels comfortable and flexible. Faddish and colorful design give a special experience to football fans.

## K98C - KIDS FOOTBALL SHOES (TF)

Composition: Synthetic Leather

Sizes: 30 - 39



907 - Neon Orange



328 - Mint Green



905 - Neon Yellow



908 - Neon Rose



413 - Sapphire Blue/Orange



### DESCRIPTION:

Selecting durable synthetic leather for soccer, with fashionable element design, it is the first choice for the daily competition and training of fashionable football fans.

**Parent-Child styles' continuation; children's exclusive color.**

## 873701/871701 - KIDS/MEN FOOTBALL SHOES (TF)

Composition: Synthetic Leather

Sizes: 28 - 39 (KID) 40 - 44 (MEN)



417 - Sapphire Blue



### DESCRIPTION:

Select durable synthetic leather for soccer, with simple seam design, full-size parent-child suit for daily training.

With smart TF outsole and exclusive football last, feel comfortable and flexible; Adopting simple and fashionable design and also bright color, bring football fan different feeling.



000 - Black



907 - Neon Orange



905 - Neon Yellow



LEAVE  
YOUR  
MARK



## 6873003 - KIDS FOOTBALL SHOES (TF)

Composition: Mesh

Sizes: 28 - 39



904 - Neon Green



417 - Sapphire Blue



907 - Neon Orange



### DESCRIPTION:

The upper uses breathable mesh, with Velcro design which is fashionable, breathable and light, suitable for daily training and competition.

With breathable mesh and secure velcro, and wear-resisting bottom which has with great outsole traction, it is breathable and comfortable, and can give a new experience to children.

## K90 - ADULT FOOTBALL SHOES (TF)

Composition: Import Kangaroo Leather&Microfiber

Sizes: 39 - 44



000 - Black



116 - Pearl White



### DESCRIPTION:

Kangaroo leather surface which is breathable, comfortable and well-wrapped and suitable for training and competition.

Kangaroo leather with simple stitching design makes passing and catching ball much more stable and powerful. TF football shoes are suitable for a variety of places.

## K91 - ADULT FOOTBALL SHOES (FG)

Composition: Import Kangaroo Leather&Microfiber

Sizes: 39 - 45



000 - Black



116 - Pearl White



### DESCRIPTION:

Kangaroo leather surface which is breathable, comfortable and well-wrapped. Professional TPU outsole, has good support and balance ability which could finish flexible dribbling and shot.

Kangaroo leather with simple stitching design makes passing and catching ball much more stable and powerful. High quality TPU bottom can provide strong support and balance for the shoes ;Use classic black and white color, fashionable and classic.





The background is a solid light green color. On the left side, there is a large, stylized, dark green 'K' shape that extends from the top left towards the bottom left. The word 'RUNNING' is written in a bold, white, italicized sans-serif font, positioned on the right side of the image.

***RUNNING***

## 6681101 - MEN RUNNING SHOES

Composition: Flyknit&TPU Outsole:MD+MB+TPU

Sizes: 40 - 44 (42.5)



421 - Sea Blue



201 - Dark Gray



000 - Black



### DESCRIPTION:

This new flyknit fabric combined with TPU film seamless support vamp, superior air permeability, equipped with full-Marathon grade MD sole, suitable for senior and middle professional runners daily training.

**Professional running shoes, with embedded Ortholite lining and double density damping sole to bring comfortable and safe running experience. Suitable for professional running race like daily marathon, mini marathon, half marathon and full marathon .**



# 6681104 - MEN RUNNING SHOES

**Composition:** Mesh&Synthetic Leather&TPU **Outsole:**MD+MB+TPU

**Sizes:** 40 - 44(42.5)



261 - Dark Gray/Black



408 - Azure Blue



935 - Neon Yellow/Dark Blue



## DESCRIPTION:

This new jacquard fabric combines with the TPU film to support the vamp seamlessly. It has superior air permeability and equipped with full-marathon grade MD sole.

Professional running shoes, with embedded Ortholite lining and double density damping out-sole to bring comfortable and safe running experience. Suitable for professional running race like daily marathon, mini marathon, half marathon and full marathon .



**LEAVE  
YOUR  
MARK**

GENERATION

**IK**

Since **1963**



**66831213 - MEN'S TRAINING SHOES**

Shell: Flyknit Outsole: E-TPU+RB

Sizes: 40-44(42.5)



261 - DARK GRAY/BLACK



000 - BLACK



100 - WHITE

**DESCRIPTION:**

Adopting convenient slip-on shoes and beautiful integrated vamp, big brand dedicated yarn, provide comfortable wearing experience.

**Brand technology K-BOM (ETPU Extended to Mid sole)** Maintain high elasticity for a long time. K-BOM is the main technology of many other brands in the future.

## 6682021 - WOMEN'S CASUAL SHOES

Shell:Textile Outsole:IP

Sizes:35-39(37.5)



000 - Black



### DESCRIPTION:

Adopting convenient slip-on shoes and beautiful integrated vamp, big brand dedicated yarn, provide comfortable wearing experience.



202 - Light Gray



674 - Dynamic Pink

**66831203 - MEN'S RUNNING SHOES**

Shell: Flyknit+TPU Outsole: IP+RB

Sizes: 40-44(42.5)



000 - BLACK



003 - BLACK/WHITE



609 - WINE RED

**DESCRIPTION:**

Breathable Slip-on Upper well snug your feet and comfortable, Suitable for intermediate runner.

Fashion lifestyle shoes for the whole family, Slip-on Design+Breathable Flyknit MEsh, Upper support with TPU, 45° Beveled High-Stretch soft cushioning delivers a springy, responsive feel



## 66832203 - WOMEN'S RUNNING SHOES

Shell: Flyknit+TPU Outsole: IP+RB

Sizes: 35-39(37.5)



000 - BLACK



100 - WHITE



### DESCRIPTION:

Breathable Slip-on Upper well snug your feet and comfortable, Suitable for intermediate runner.

Fashion lifestyle shoes for the whole family, Slip-on Design+Breathable Flyknit Mesh, Upper support with TPU, 45° Beveled High-Stretch soft cushioning delivers a springy, responsive feel

**66831514 - MEN'S SPORTS SHOES**

Shell: Flyknit+TPU Outsole: IP+RB

Sizes: 40-44(42.5)



000 - BLACK



100 - WHITE

**DESCRIPTION:**

New type integrated fabric is synchronized with adidas which is light and breathable. Reflective mesh makes night running much safer and the yarn is specially used by big brands, which is soft and comfortable.

**Hollowed-out sole was extended by high-elasticity IP. Using the hollowed-out structure of the sole, it can absorb the press of the feet from men's body.**

## 66831216 - MEN'S SPORTS CASUAL SHOES

Shell: Flyknit Outsole: E-TPU+RB

Sizes: 40-44(42.5)



600 - RED



000 - BLACK



200 - GRAY



### DESCRIPTION:

The integrated fabric is inspired by football hexagon, and the yarn is specially used by big brands, which is soft and comfortable

**Brand technology K-BOM (ETPU Extended to Mid sole)** Maintain high elasticity for a long time. K-BOM is the main technology of many other brands in the future.



**66831502- MEN'S SPORTS SHOES**

Shell: Flyknit+TPU Outsole: MD+RB

Sizes: 40-44(42.5)



808 - ORANGE



416 - DARK BLUE



000 - BLACK

**DESCRIPTION:**

Slip-on breathable upper with EVA Cushioning, satisfy your elementary daily running and outfit

**Chic for the whole family, lip-on breathable flyknit mesh, lightweight and easily-worn for your everyday outfit**

## 66832502- WOMEN'S SPORTS SHOES

Shell: Flyknit+TPU Outsole: MD+RB

Sizes: 35-39(37.5)



000 - BLACK



100 - WHITE



733 - WHEAT



### DESCRIPTION:

Slip-on breathable upper with EVA Cushioning, satisfy your elementary daily running and outfit

**Chic for the whole family, lip-on breathable flyknit mesh, lightweight and easily-worn for your everyday outfit**

**66832200 - WOMEN'S SPORTS CASUAL SHOES**

Shell: Flyknit+Synthetic    Outsole: MD+RB

Sizes: 35-39(37.5)



000 - BLACK



100 - WHITE



200 - GRAY

**DESCRIPTION:**

Fashion Unisex Shoes provides streamlined flynit construction, a shoe that's ready for your daily tackling and training.

**Fashion Unisex Shoes for the whole family.** Flyknit fabric conforms to the natural shape of your foot for a snug, sock-like feel.

MD cushioning helps protect against the impact of your footstrike as you run;

Rubber outsole sections on heel and forefoot for durability



## 66831200 - MEN'S SPORTS CASUAL SHOES

Shell: Flyknit+Synthetic    Outsole: MD+RB

Sizes: 40-44(42.5)



000 - BLACK



200 - GRAY



432 - BLUE



### DESCRIPTION:

Fashion Unisex Shoes provides streamlined flynit construction, a shoe that's ready for your daily tackling and training.

Fashion Unisex Shoes for the whole family. Flyknit fabric conforms to the natural shape of your foot for a snug, sock-like feel.

MD cushioning helps protect against the impact of your footstrike as you run;

Rubber outsole sections on heel and forefoot for durability

**6681103 - MEN SPORTS SHOES**

Composition: Mesh  
 Sizes: 40 - 44 (42.5)



061 - Cool Black



100 - White



278 - Deep Cold Gray

**DESCRIPTION:**

Double jacquard design with line in the middle, suitable for professional and semi-professional runner.

Double jacquard and honeycomb damping design, bring comfort and breathing experience, meet the demand of casual wearing, running and half marathon.

## 6681201 - MEN SPORTS SHOES

Composition: Flyknit & TPU

Sizes: 40 - 44 (42.5)



061 - Cool Black



### DESCRIPTION:

Adopting breathing mesh design and new topline design, very suitable for beginners, intermediate runners, urban jogging and fashion wear.

New flyknit upper design with most fashionable material, and high-resiliency EVA mid-sole, has the feature of soft comfortable, and faddish.



807 - Bright Orange



432 - Blue



## 6681202/6682202- MEN/WOMEN SPORTS SHOES

Composition: Flyknit&TPU

Sizes: 40-44(42.5)-MEN, 35-39(37.5)-WOMEN



061 - Cool Black (MEN/WOMEN)



044 - Middle Gray (MEN)



807 - Bright Orange (MEN)



100 - White (WOMEN)



674 - Dynamic Pink (WOMEN)



### DESCRIPTION:

Adopting breathing mesh design and new topline design, very suitable for beginners, intermediate runners, urban jogging and fashion wear.

New flyknit upper design with most fashionable material, and high-resiliency EVA mid-sole, has the feature of soft comfortable, and faddish.

## 876703 - LEISURE SPORTS SHOES

Composition: Mesh

Sizes: 35 - 45



353- Mint Green/Black

### DESCRIPTION:

Mesh fabric and ultra-thin process design, which is breathable, stable, comfortable, and suitable for daily sports wear.

Lightweight and wearable, pliable outsole, which is light and cushioned, and suitable for daily exercise and life.



003 - Black/White



208 - Gray/Red



819 - Bright Orange/Blue



415 - Royal Blue/Neon Green



000 - Black



600 - Red



100 - White



933 - Neon Green/Black



LEAVE  
YOUR  
MARK

## 6871100/6872100 - MEN/WOMEN SPORTS CASUAL SHOES

Composition: Mesh

Sizes: 35-39(WOMEN) 40-44(MEN)



003 - Black/White



### DESCRIPTION:

The shoe is used to accept the prize in National Games. The logo stands for honor of hard work and harvest.

Adopting breathable mesh cloth, ultra-thin process support, and resilient and wearable lightweight outsole which is well-fitted, breathable, and comfortable, can meet the needs of exercise and daily life.



662 - China Red



666 - Ice Pink



201 - Dark Gray



## K783A/K783B - WOMEN/MEN RUNNING SHOES

Composition: Flyknit

Sizes: 35 - 40 (WOMEN) 39-44 (MEN)



904 - Neon Green (MEN)



### DESCRIPTION:

Flyknit design on the vamp, which is fashion and lightweight, suitable for short distance running and casual wear.

Flyknit design on the vamp, which is comfortable and breathable, suitable for short distance running and casual wear.



984 - Neon Yellow/Light Green (MEN/WOMEN)



907 - Neon Orange (MEN/WOMEN)



426 - Moon Blue (MEN)



490 - Moon Blue/Rose (WOMEN)



222-Melange Gray (MEN/WOMEN)



LEAVE  
YOUR  
MARK

## 6681005 - MEN CASUAL SHOES

Composition: Flyknit & TPU

Sizes: 40 - 44 (42.5)



000 - Black



261 - Dark Gray/Black



308 - Army Green



600 - Red



### DESCRIPTION:

It has the feature of latest flyknit technique and light IP sole, and is quite suitable for exercise in the park and casual wear.

The newest flyknit fabric, give you well-fitted and faddish experience. Slip-on design and IP cushioning sole are suited to exercise in the park and wear in daily life.

## 6681006/6682006 - MEN/WOMEN CASUAL SHOES

Composition: Flyknit & Synthetic

Sizes: 40-44(42.5)-MEN, 35-39(37.5)-WOMEN



061 - Cool Black (MEN/WOMEN)



### DESCRIPTION:

It fits the current classic trend, the upper use breathable mesh material which is soft and comfortable, combined with molding line elements which is classic.

Fashion classic casual shoes with simple design style, easy to match cloth. There are also LOVER STYLE for your selection.



278- Deep Cool Gray (MEN)



308 - Army Green (MEN)



100 - White (WOMEN)



636 - Pink (WOMEN)



LEAVE  
YOUR  
MARK



**6681007 - MEN CASUAL SHOES**

Composition: Flyknit&amp;Synthetic

Sizes: 40 - 44 (42.5)



061 - Cool Black



100 - White

**DESCRIPTION:**

Adopting flyknit upper and super fiber leather for supporting its structure. Quite suitable for walking in the park and casual wear.

Newest faddish upper design, with leather packaged in the middle surface, ensure comfort experience. Necessary goods for the current trend.

## 6681009 - MEN CASUAL SHOES

Composition: Flyknit & Synthetic & TPU

Sizes: 40 - 44 (42.5)



003 - Black/White



201 - Dark Gray



610 - Red/White



### DESCRIPTION:

Fashion and light, high frequency design of the heel give perfect support to the shoes appearance. Flyknit design makes the shoes portable and suitable for daily wearing.

Professional running shoes, with embedded Ortholite lining and double density damping sole to bring comfortable and safe running experience. Suitable for professional running race like daily marathon, mini marathon, half marathon and full marathon.

**6681010 - MEN CASUAL SHOES**

Composition: Flyknit Synthetic&amp;TPU

Sizes: 39 - 44



061 - Cool Black



416 - Dark Blue



202 - Light Gray

**DESCRIPTION:**

Breathing upper with high-resilient sole, is well suited with casual wear.

New integrated upper design makes it well-fitted. High-resilient IP sole, high cushion function. Give you perfect wearing experience.



## 6681011 - MEN CASUAL SHOES

Composition: Mesh&Synthetic

Sizes: 40 - 44 (42.5)



000 - Black



003 - Black/White



600 - Red



### DESCRIPTION:

personalized shoelace design, fashion and distinctive. With portable IP sole, it is perfect for exercise and casual wear.

Newest vamp design. Give you well-fitted and faddish experience. Slip-on design and IP cushioning sole are suited to exercise in the park and wear in daily life.

**6681012 - MEN CASUAL SHOES**

Composition: Textile Flyknit &amp; TPU

Sizes: 39 - 44



201 - Dark Gray



308 - Army Green



000 - Black

**DESCRIPTION:**

Integrated fabric design of the vamp, which is fashionable and light, suitable for short distance runners within 5 kilometers. and daily fashion wear .

Light integrated vamp design, Give you well-fitted and faddish experience. Slip-on design and IP cushioning sole are suited to exercise in the park and wear in daily life.

## 6681018 - MEN SPORTS CASUAL SHOES

Composition: Flyknit & TPU

Sizes: 40 - 44 (42.5)



100 - White



### DESCRIPTION:

Integrated fabric design of the vamp, which is fashionable and light, suitable for short distance runners within 5 kilometers and daily fashion wear.

Integrated fabric design, well-fitted and easy to wear with slip-on. High EVA bottom and perfect resilience, suitable for short distance runners and daily needs.



000- Black



202 - Light Gray



## 6871101/6872101 - MEN/WOMEN CASUAL SHOES

Composition: Textile+TPU

Sizes: 39-45(MEN), 35-40(WOMEN)



000 - Black (MEN/WOMEN)



### DESCRIPTION:

Using gauze and mesh vamp, which is fashionable and simple and also with lightweight wearable IP sole, which is easy for match and fashionable.

**Lightweight rebound outsole** which is breathable and comfortable.



100 - White (MEN/WOMEN)



200 - Gray (MEN)



328- Mint Green (WOMEN)



608 - Process Red (WOMEN)



933- Neon Green/Black (MEN)

## 6881200/6882200 - MEN/WOMEN CASUAL SHOES

Composition: Elastic Fabric+TPU

Sizes: 35 - 39 (WOMEN) 39 - 44 (MEN)



000 - Black



416 - Dark Blue (MEN)



674 - Dynamic Pink (WOMEN)



### DESCRIPTION:

Rubber printing lycra and TPU support design which can improve comfort experience, is the first choice for daily life.

With slip-on design, light and easy to wear, and lightweight rebound outsole, which can satisfy the fashionable collocation demand of daily life.

**6681014 - MEN RETRO SHOES**

Composition: Suede

Sizes: 39 - 44

**202 - Light Gray****733 - Wheat****DESCRIPTION:**

With the concept of retro football culture, it has provided super fiber and suede material for your selection. Both suitable for football fans and players.

Remaking Spanish classical shoes, which is a necessary product for retro trend. EVA damping slice ensures comfort wearing experience.



## 6681015 - MEN RETRO SHOES

Composition: Microfiber&Mesh

Sizes: 39 - 44



000 - Black



100 - White



### DESCRIPTION:

With the concept of retro football culture, it has provided super fiber material for your selection. Both suitable for football fans and players.

Remaking Spanish classical shoes, which is a necessary product for retro trend. EVA damping slice ensures comfort wearing experience.

**6681016 - MEN SNEAKERS**

Composition: Microfiber

Sizes: 40 - 45 (MEN) 35 - 39 (WOMEN)

**105 - White/Green****100 - White****6682016 - WOMEN SNEAKERS****DESCRIPTION:**

Fashion white shoe, casual and light, suitable for daily wear.

The material is made of super fiber, soft and comfortable, with a new RB mid-sole design (EVA cushioning pad), clean and fresh color, suitable for daily wear.

## 6871103 - MEN RETRO CASUAL SHOES

Composition: Oxford

Sizes: 39 - 44



416 - Dark Blue



000 - Black



### DESCRIPTION:

With oxford cloth, which is soft and breathable.

Rubber EVA midsole, which is light and comfortable. A versatile model, can meet people's daily needs.



**6871102 - MEN CASUAL SHOES**

Composition: Microfiber

Sizes: 39 - 44



100 - White

**DESCRIPTION:**

Soft superfine fiber vamp, which is classic and versatile, and the best choice for minimalist.

Rubber EVA midsole, which is light and comfortable, with classic color- white and black, perfectly meet the needs of minimalist.



003 - Black/White



000 - Black

## 6871200 - MEN SLIPPERS

Composition: EVA

Sizes: 40 - 45



000 - Black



010 - Black/Neon Green



023 - Black/Orange



904 - Neon Green



416 - Dark Blue



100 - White

### DESCRIPTION:

Widen forefeet and massaging granule design, which is comfortable and light, can meet the needs of daily casual life.

Using quick-dry EVA material on midsole, wearable and antiskid design on outsole which is suitable for casual wear.



LEAVE  
YOUR  
MARK

## 6881300/6881301- MEN SLIPPERS

Composition: Mesh&EVA

Sizes: 39 - 45



012 - Black/Neon Yellow  
(6881300)



023 - Black/Orange  
(6881300)



417 - Sapphire Blue  
(6881301)



003 - Black/White  
(6881301)

### DESCRIPTION:

Fashionable design and suitable for casual wear.

Rhombic drainage hole  
Antiskid and durable outsole  
Fashionable upper design  
Suitable for your daily life



# NOTAS/NOTES

---

---

---

---

---

---

---

---

---

---

---

# NOTAS/NOTES

---

---

---

---

---

---

---

---

---

---

---



**LEAVE  
YOUR  
MARK**

[WWW.KELMECHINA.COM](http://WWW.KELMECHINA.COM)